

Quilting Made Easy



by *Sew Steady*

## Feathers

Quilt beautiful Feathers  
Set of 4 Templates 5" - 4" - 3" - 2"



The instructions given are to get you started. Use your imagination and see what amazing designs you can create using Westalee Design Rulers and Templates to enhance your quilts.

For more information on the Westalee Design range of Rulers and Templates for Patchwork and Quilting visit

Westalee Design by Sew Steady

[www.sewsteady.com](http://www.sewsteady.com)

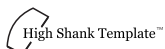
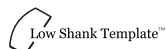
800-837-3261

[info@sewsteady.com](mailto:info@sewsteady.com)

Scan the QR-Code to view instruction videos



All Westalee Design - Designs, Tools, Patterns, Books, Graphics and Text are protected by Copyright and Trademark Laws ©2007-2017 Westalee Design and cannot be reproduced by any means or in any form without the written consent of Westalee Design. By purchasing any Westalee Design product you agree to abide by International Copyright Law. All rights Reserved 2007-2017



WT FS4 SP60 PE01 2017

Quilting Made Easy



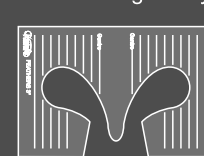
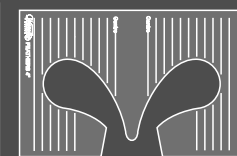
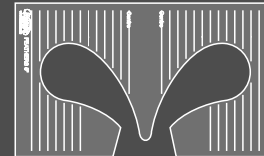
by *Sew Steady*

## Feathers

Quilt beautiful Feathers  
Set of 4 Templates 5" - 4" - 3" - 2"



For use on Domestic Sewing Machines  
Designed by Leonie West



**Low Shank Template™**

Part# WT-FS4-LS

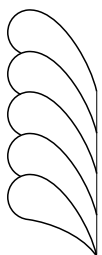
\$60.00 USA



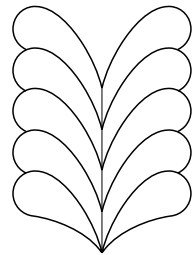
7 01233 70710 9

## Westalee Design Feather Template

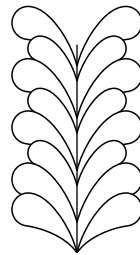
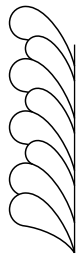
Quilt beautiful Feathers with Straight Spines or Curved Spines. Our Feather Templates can be used to quilt Feathers around circles.



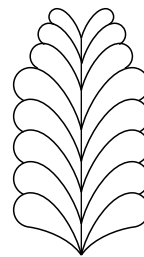
Feathers can be sewn in a single line



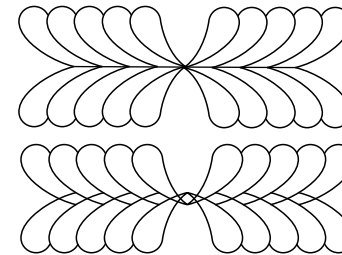
Feathers can be sewn in a double line



Feathers can be sewn using different sizes in a single or double line

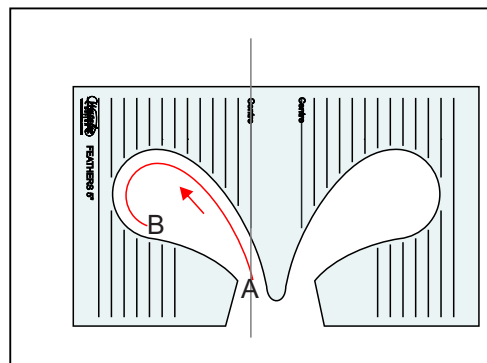


Feathers can be sewn to create a plume

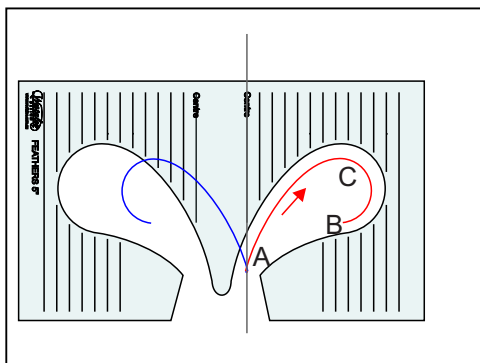


Feathers can be sewn in opposite directions

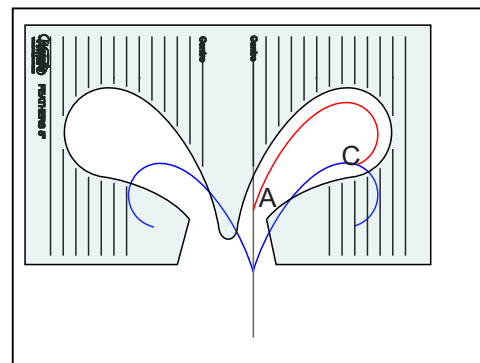
Begin by stitching the Spine of the Feather - this can be a straight or a curved spine.



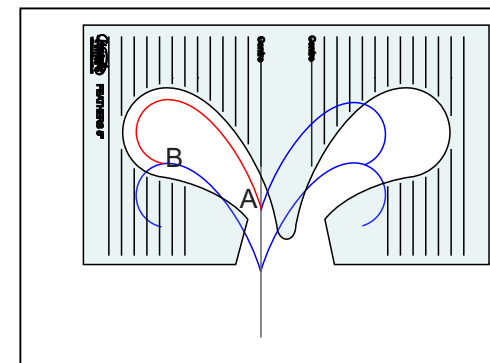
**Stitching line shown in Red**  
Align the Centre line on the template with the Spine of the Stitch from **A** to **B** stop at the spine.



Move the template to the right and align the Centre line on the template with the Spine of the Stitch from **A** to **B**.  
Back track to **C**.



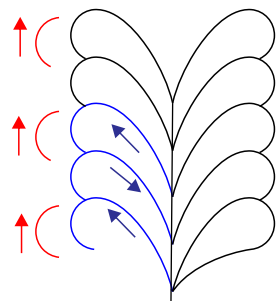
Move the template to the left and align the Centre line on the template with the Spine of the Stitch from **C** to **A**.



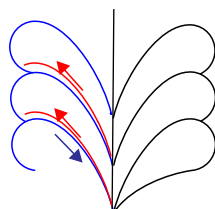
Move the template to the left and align the Centre line on the template with the Spine of the Stitch from **A** to **C**.  
Continue moving and stitching until you have completed the feather.

Back tracking - when sewing feathers we usually need to backtrack over a previously stitched line.  
Below are 3 ways to backtrack using our Feather Template.

Back track **shown in Red**



Back track along the hump of the feather



Back track along the feather edge



No backtrack