

Angel Wings

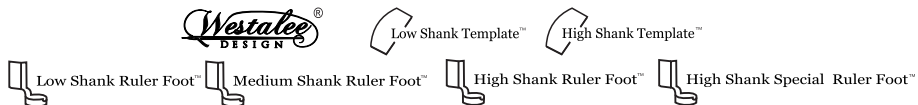
Set of 4 Templates: 1 Wing, 4 Inserts

The instructions given are to get you started. Use your imagination and see what amazing designs you can create using Westalee Design rulers and templates to enhance your quilts.

For more information on the Westalee Design range of rulers and templates for patchwork and quilting, visit:

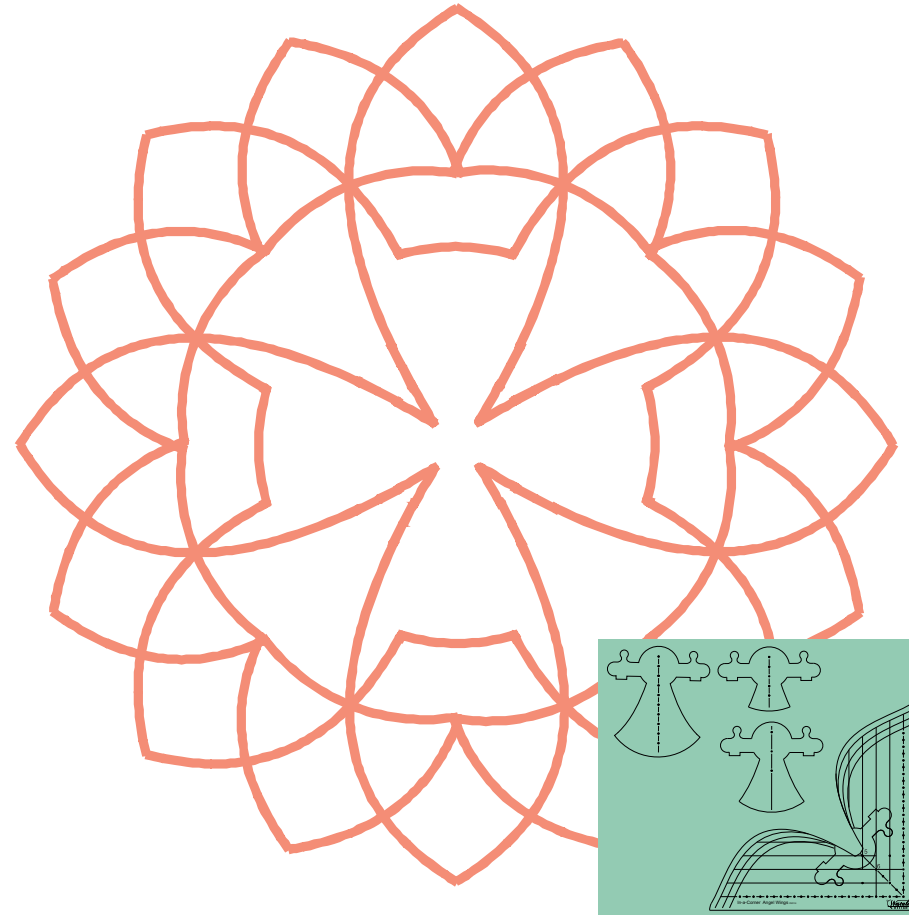
Westalee Design by Sew Steady
www.sewsteady.com
 800-837-3261
info@sewsteady.com

All Westalee Design designs, tools, patterns, books, graphics and text are protected by copyright and trademark laws ©2007-2017 Westalee Design and cannot be reproduced by any means or in any form without the written consent of Westalee Design. By purchasing any Westalee Design product you agree to abide by International Copyright law. All rights reserved 2007-2016



Angel Wings

Set of 4 Templates: 1 Wing, 4 Inserts



Low Shank Template

Part# WT-ANGELWINGS-LS

\$35.00 USA



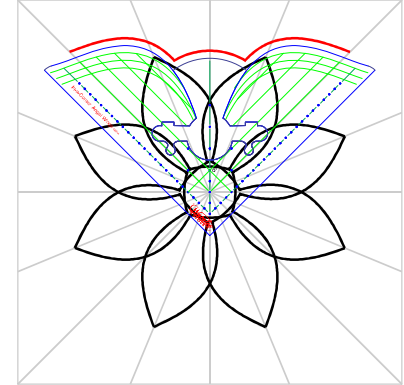
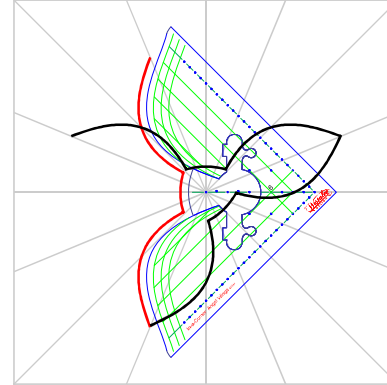
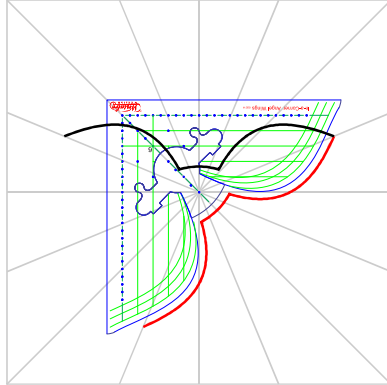
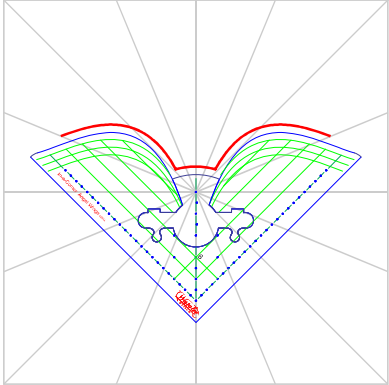
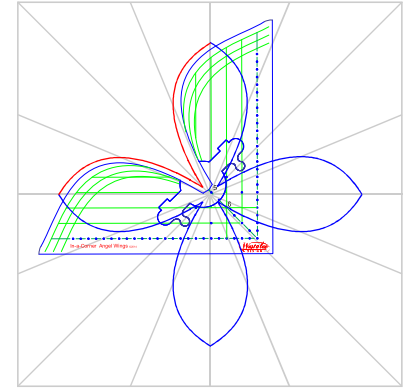
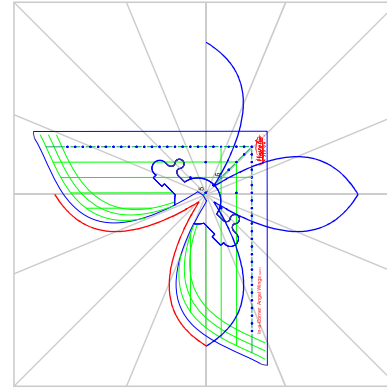
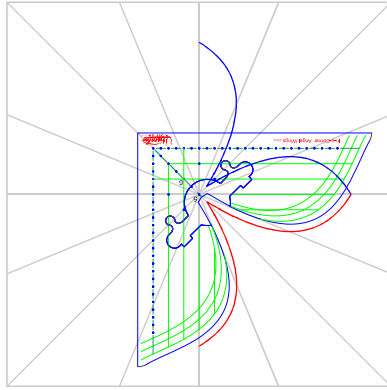
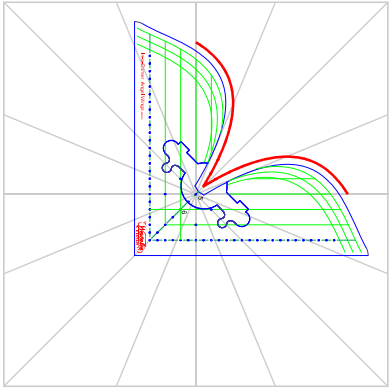
Westalee Design Angel Wing Template

Quilt beautiful rotating and border designs. The 4 Inserts offer different pivot points to allow for many sizes of concentric design.

Mark the centre and the required number of **Crosshair Reference Lines** on the block to be quilted using the **Crosshair Ruler**.

Place the template in position. Align the **Reference Lines** on the Template with marked Reference Lines. Stitch the first section of the design.

Rotate the Template, align the **Reference Lines** and then stitch the next section of the design.



For border designs, simply stitch first section of design, then mirror the Template and stitch a second:

