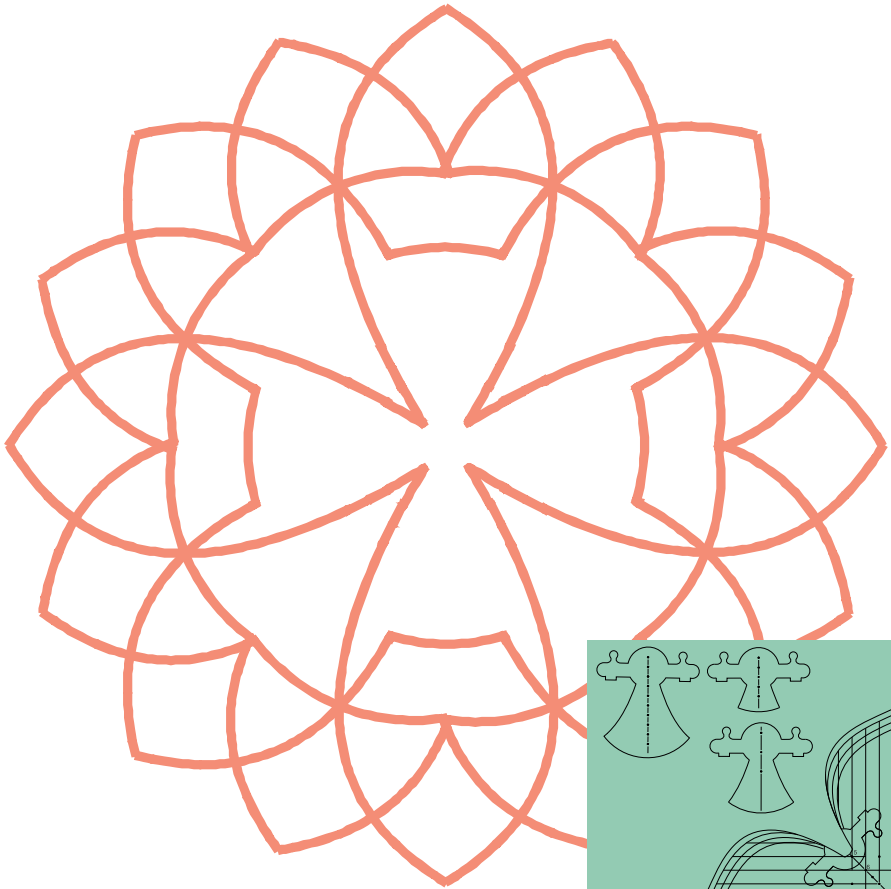


Angel Wings

Set of 4 Templates: 1 Wing, 4 Inserts



FREE CLASS WITH PURCHASE CLICK HERE:

<https://sew-steady-university.teachable.com/p/angel-wings>

COUPON CODE: ANGEL23

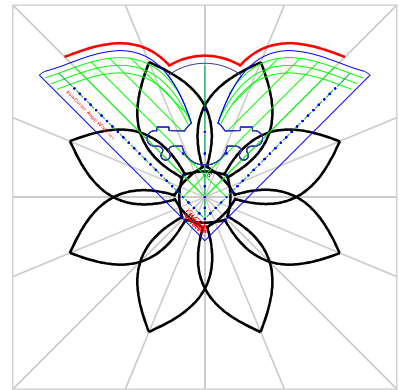
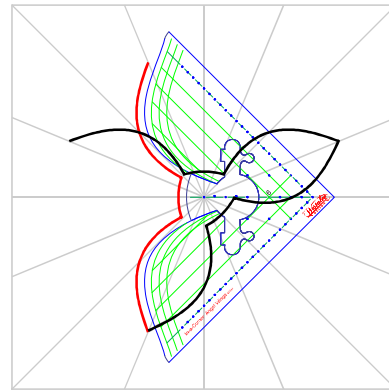
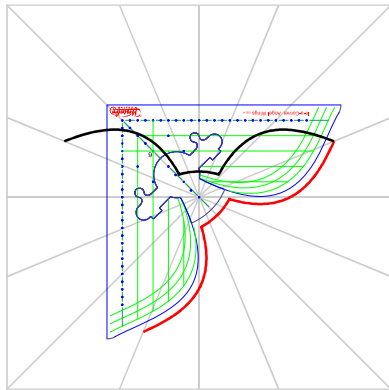
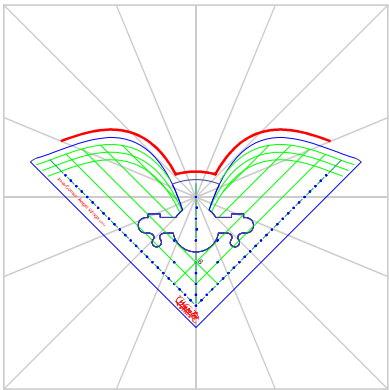
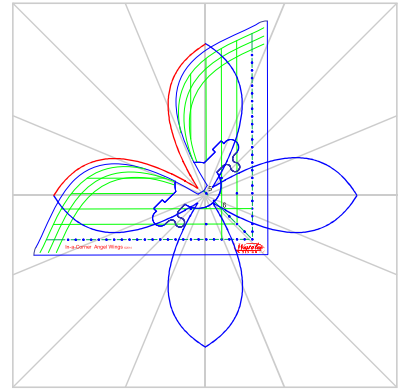
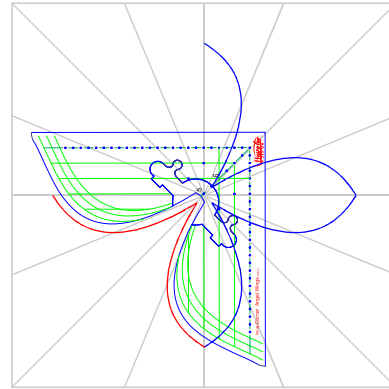
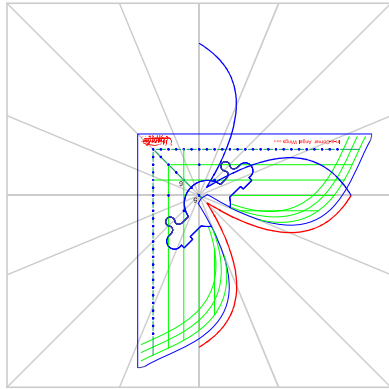
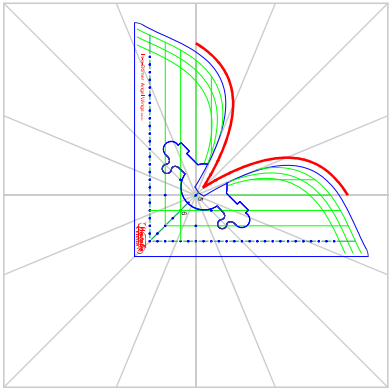
Westalee Design Angel Wing Template

Quilt beautiful rotating and border designs. The 4 Inserts offer different pivot points to allow for many sizes of concentric design.

Mark the centre and the required number of **Crosshair Reference Lines** on the block to be quilted using the **Crosshair Ruler**.

Place the template in position. Align the **Reference Lines** on the Template with marked Reference Lines. Stitch the first section of the design.

Rotate the Template, align the **Reference Lines** and then stitch the next section of the design.



For border designs, simply stitch first section of design, then mirror the Template and stitch a second:

